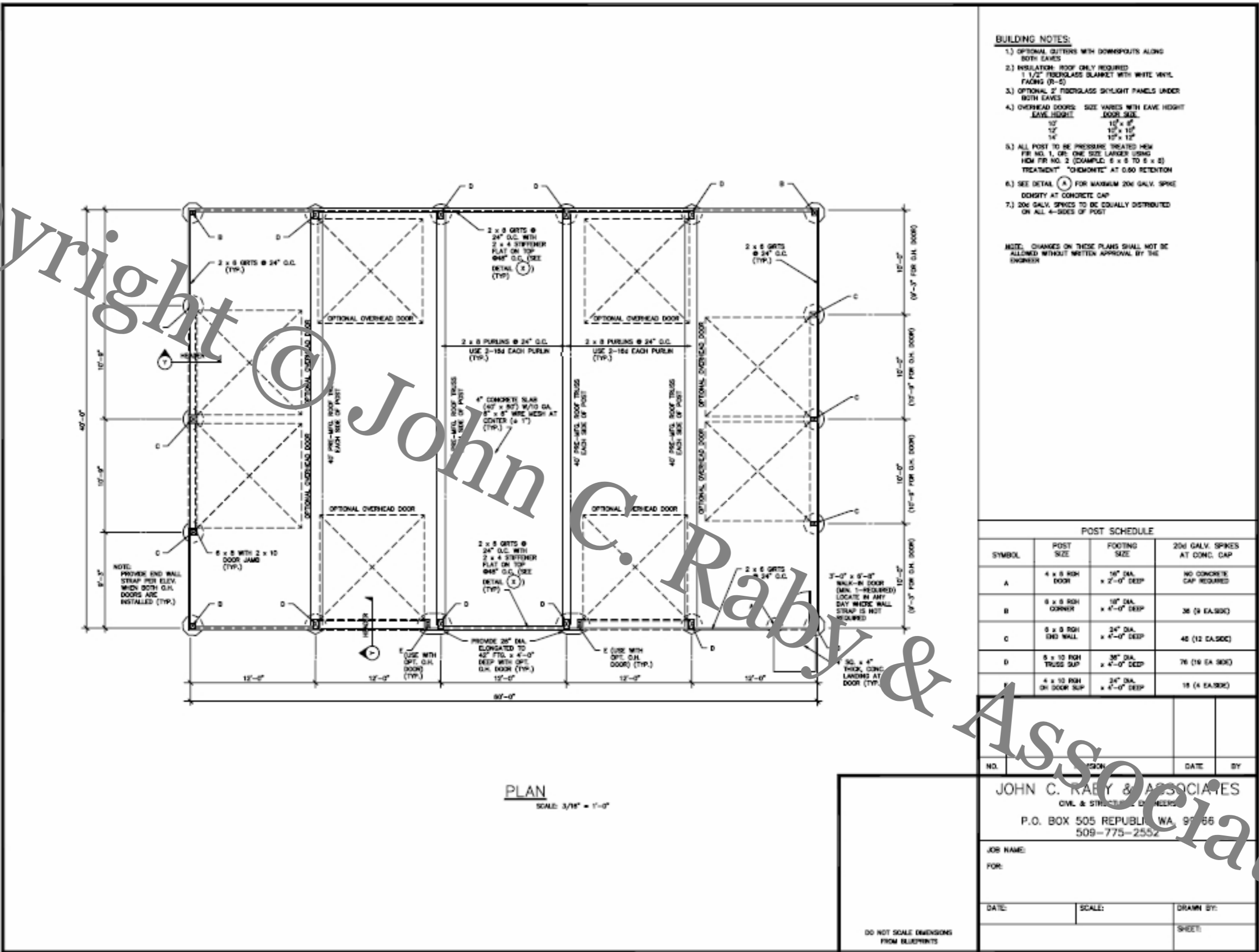


Copyright ©

John C. Raby & Associates



PLAN
SCALE: 3/16" = 1'-0"

- BUILDING NOTES:**
- OPTIONAL GUTTERS WITH DOWNSPOUTS ALONG BOTH EAVES
 - INSULATION: ROOF ONLY REQUIRED
1 1/2" FIBERGLASS BLANKET WITH WHITE VINYL FACING (R-5)
 - OPTIONAL 2" FIBERGLASS SKYLIGHT PANELS UNDER BOTH EAVES
 - OVERHEAD DOORS: SIZE VARIES WITH EAVE HEIGHT

EAVE HEIGHT	DOOR SIZE
12'	12' x 10'
13'	12' x 12'
14'	12' x 12'
 - ALL POST TO BE PRESSURE TREATED HEM FIR NO. 1, OR: ONE SIZE LARGER USING HEM FIR NO. 2 (EXAMPLE: 6 x 6 TO 8 x 8) TREATMENT "CHROMITE" AT 0.60 RETENTION
 - SEE DETAIL (A) FOR MAXIMUM 20# GALV. SPIKE DENSITY AT CONCRETE CAP
 - 20# GALV. SPIKES TO BE EQUALLY DISTRIBUTED ON ALL 4-SIDES OF POST
- NOTE: CHANGES ON THESE PLANS SHALL NOT BE ALLOWED WITHOUT WRITTEN APPROVAL BY THE ENGINEER

POST SCHEDULE			
SYMBOL	POST SIZE	FOOTING SIZE	20# GALV. SPIKES AT CONC. CAP
A	4 x 8 RH DOOR	16" DIA. x 2'-0" DEEP	NO CONCRETE CAP REQUIRED
B	6 x 6 RH CORNER	18" DIA. x 4'-0" DEEP	36 (9 EA/SIDE)
C	6 x 6 RH END WALL	24" DIA. x 4'-0" DEEP	48 (12 EA/SIDE)
D	8 x 10 RH TRUSS SUP	36" DIA. x 4'-0" DEEP	76 (19 EA/SIDE)
E	4 x 10 RH ON DOOR SUP	34" DIA. x 4'-0" DEEP	18 (4 EA/SIDE)

NO.	REVISION	DATE	BY
JOHN C. RABY & ASSOCIATES CIVIL & STRUCTURAL ENGINEERS P.O. BOX 505 REPUBLIC WA 99166 509-775-2552			
JOB NAME:			
FOR:			
DATE:	SCALE:	DRAWN BY:	
		SHEET:	

DO NOT SCALE DIMENSIONS FROM BLUEPRINTS