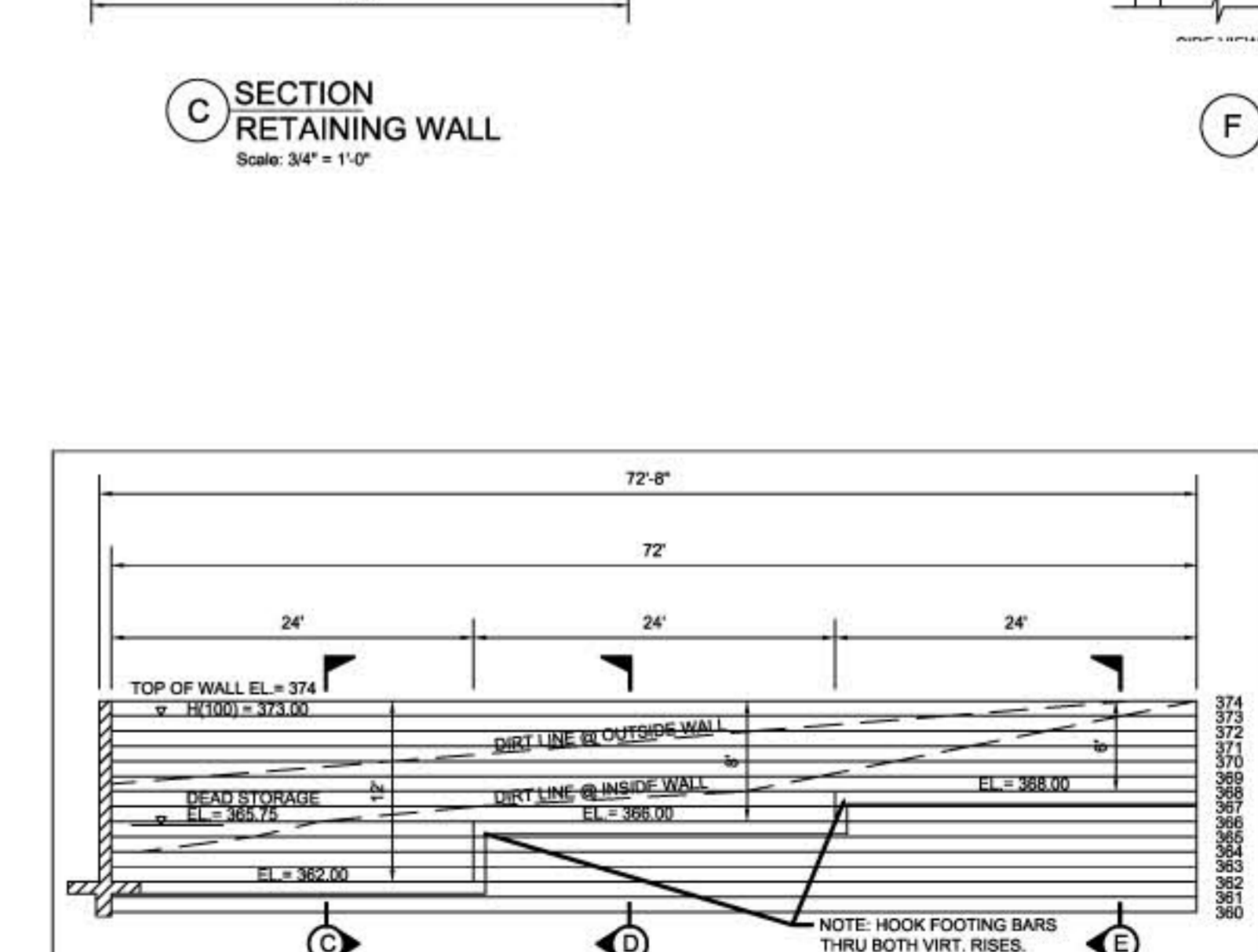
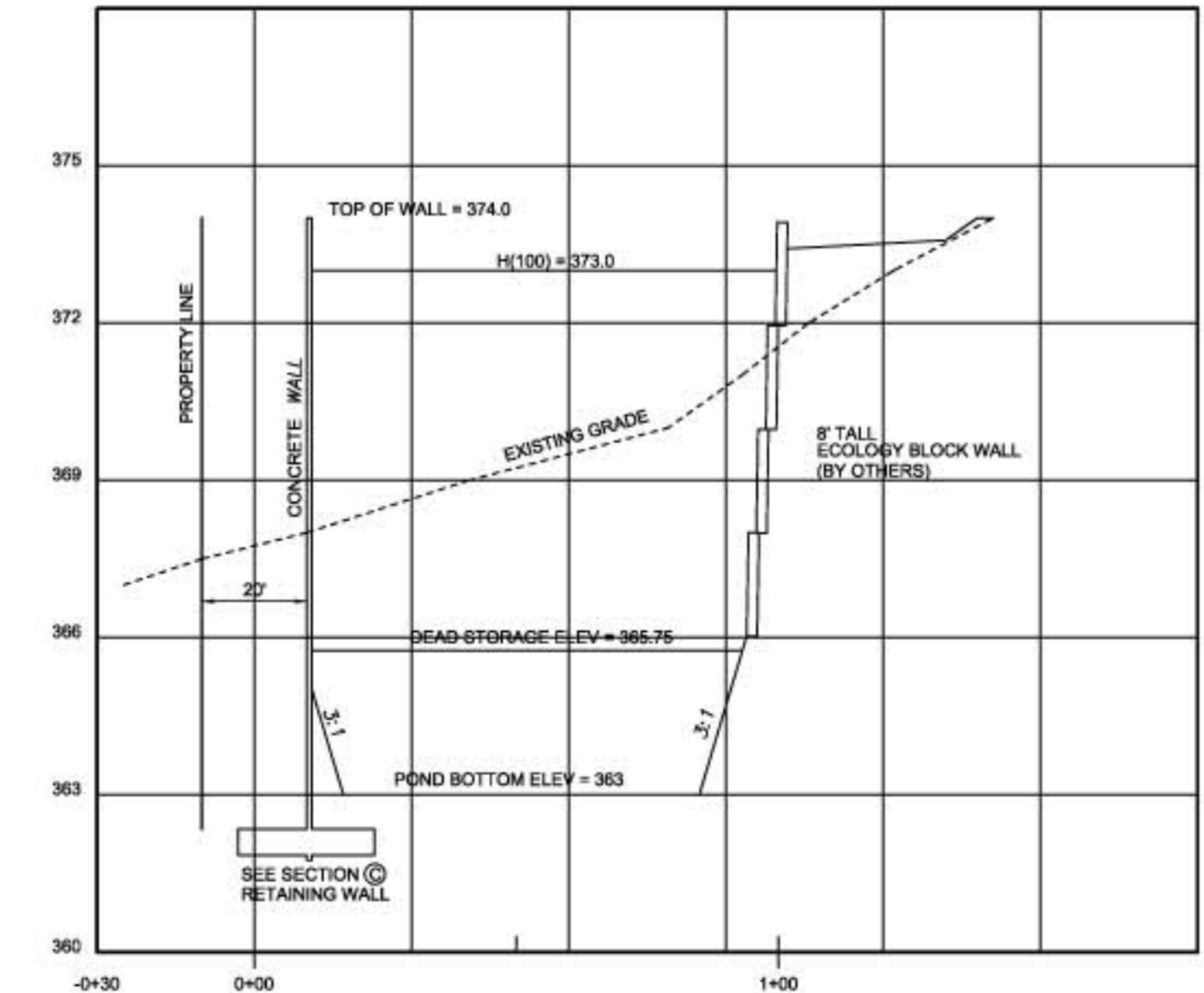
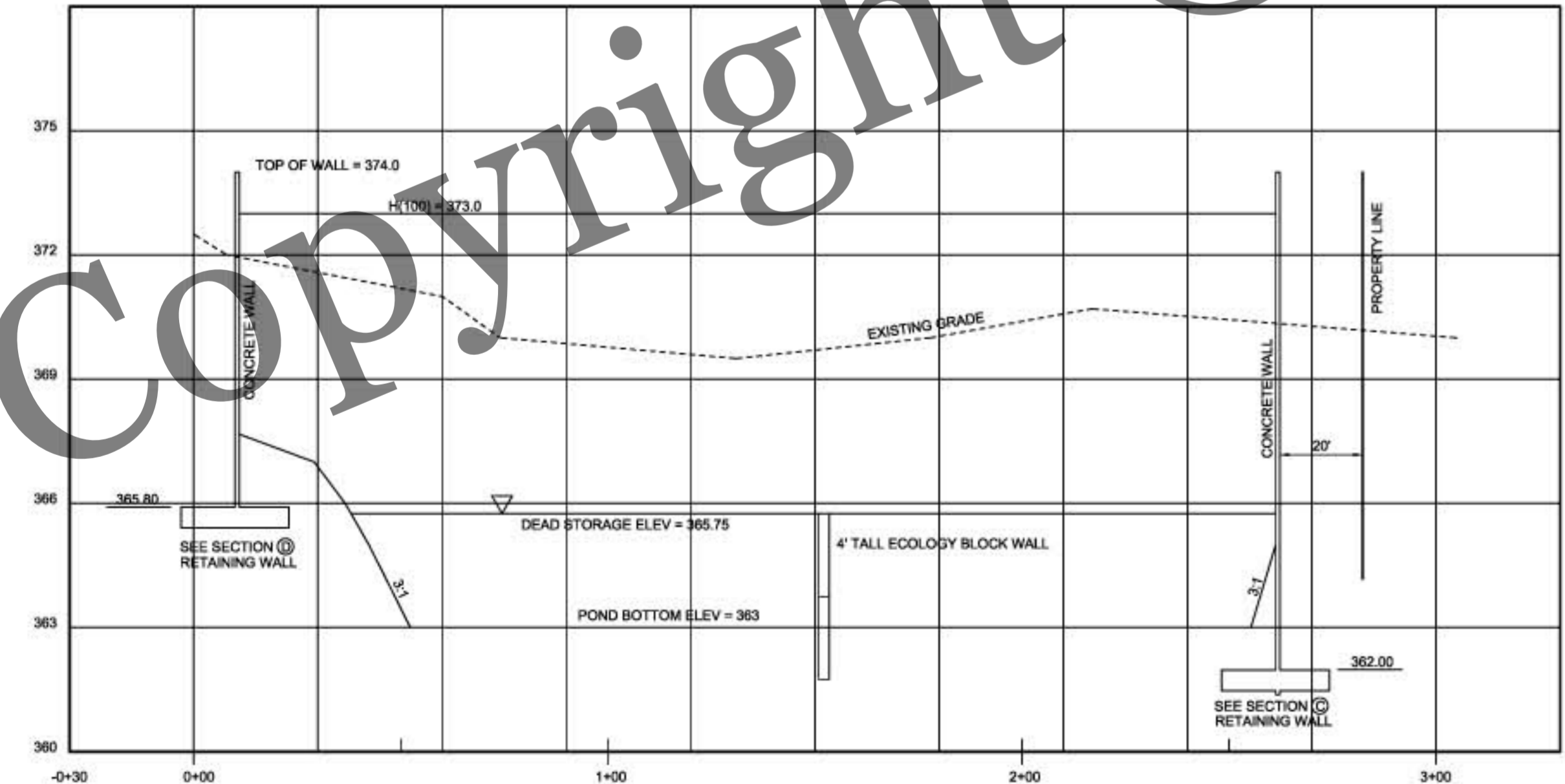
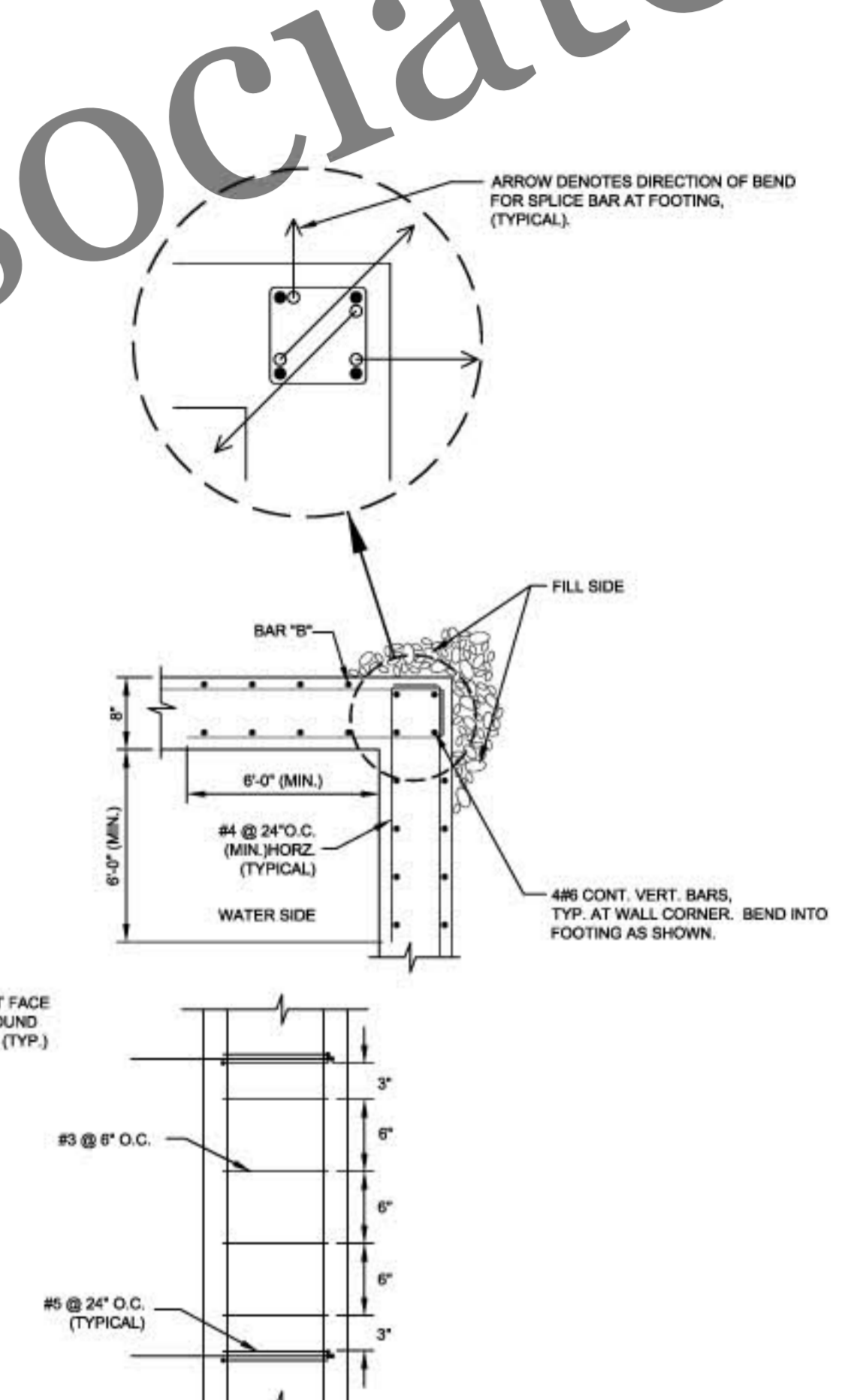


- NOTES:**
- (1) REFER TO SOILS REPORT FOR OTHER IMPORTANT GEOTECHNICAL CONSIDERATIONS, INCLUDING TEMPORARY SLOPE STABILITY DURING CONSTRUCTION.
 - (2) WHEN FORMING AGAINST DIRT, PROVIDE NATIVE SOIL AT ALL HORIZ. & VIRT. FOOTING.
 - (3) FOUNDATION DRAIN: 4" MIN. PVC PERFORATED DRAIN PIPE (SDR 35) TO SLOPE AND DRAIN TO GRAVITY STORM SEWER LINE. (ASTM E-180)
 - (4) REBARS TO BE INSTALLED SIDE BY SIDE WITH ADJACENT BARS, TO MAINTAIN THE SAME CONCRETE COVER.
 - (5) FOR CONCRETE COVER: (1907 UBC, SECTION 1907.7.1)
 - (5.1) FOR CONCRETE CAST AGAINST AND PERMANENTLY EXPOSED TO EARTH, MINIMUM COVER = 3"
 - (5.2) FOR CONCRETE EXPOSED TO EARTH OR WEATHER AND FORMED CONCRETE SURFACES: MINIMUM COVER = 2", FOR NO. 8 TO NO. 18 BAR; MINIMUM COVER = 1 1/2", FOR NO. 5 BAR, AND SMALLER.
 - (6) CONCRETE STRENGTH: f'c = 2,500 PSI (WALL & FOOTING); REBAR STRENGTH: fy = 50,000 PSI
 - (7) VIBRATE ALL CONC. PER CODE.



No.	DATE	INIT.	REVISION
1	6/27/02	JR	REVISED POND AND WALLS

APPROVED FOR CONSTRUCTION

GARRISON ENGINEERING

CIVIL ♦ STORM DRAINAGE ♦ WATER SYSTEMS ♦ MECHANICAL
HVAC ♦ PLUMBING ♦ FIRE PROTECTION ♦ INDUSTRIAL ♦ STRUCTURES

1997 Park Lane Burlington, Wa. 98233 (360) 707-5556 Fax (360) 707-5558

DAN MITZEL

ARLINGTON, WASHINGTON
PLAN, PROFILE & DETAILS
RETAINING WALL

DRAWN/DESIGNED BY: SCP	CAD FILE NUMBER: 02009RETWALL.DWG
CHECKED BY: JR	COUNTY: SNOHOMISH
DATE: JULY 1ST 2002	JOB NUMBER: 02009-A
SCALE: HORIZONTAL AS-NOTED VERTICAL N/A	1 OF 1